



FOOTHILL YOUTH BASKETBALL

SUNNYVALE · LOS ALTOS · LOS ALTOS HILLS · MOUNTAIN VIEW

FYB Practices

<https://foothillyouthbasketball.org/gyms.php>

Arun Shankar

arun.shankar@foothillyouthbasketball.org

650 450 2474

Hat Tip: Michiel Ligthart



Intro

- Remember: We are guests in our gyms
 - No food and drinks (except water)
 - We will get blacklisted if we don't adhere to their rules.
- Gym time is precious, so be on time
 - If you are late, your players will be late next practice as well
- Be courteous
 - To other users
 - To other FYB teams
 - To the people opening / closing the gyms
- Pick up your trash
 - Bottles, sweaters, etc.
 - Even if it is not yours
- Lock up if you are the last user of the day

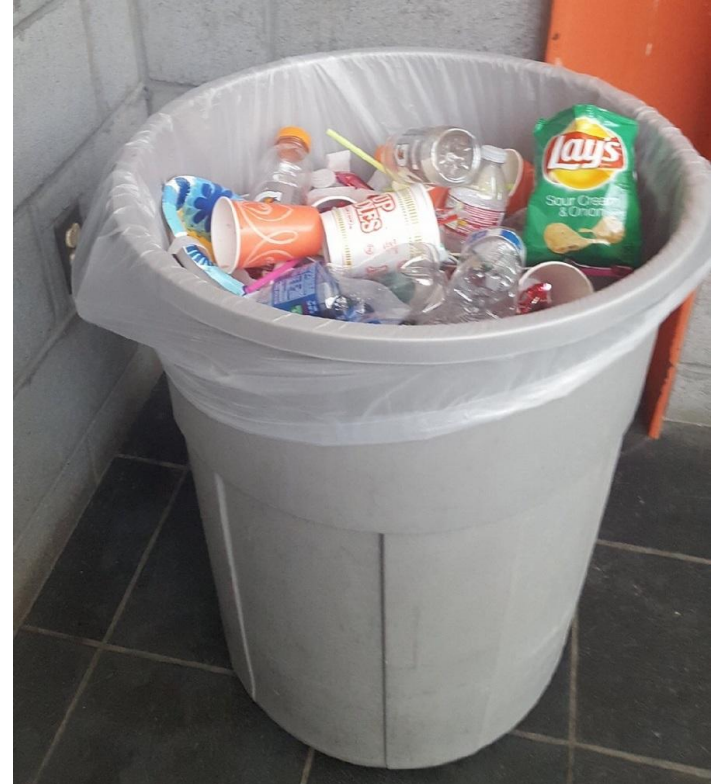


Picture from Egan custodial staff

This was not FYB (couldn't have been!) ■

We don't want to get these emails.

No food or drinks in the gyms except water !



Practice allotment

- Nov / Dec (6 weeks)
 - 2 practices per week * 1.5 hr each.
 - 1 Weeknight practice (Mon - Thu)
 - D3 teams get first dibs at 6 pm slots
 - 1 Weekend Practice (Fri - Sat)
- Jan / Feb (5 Weeks)
 - One practice per week * 1.5hrs.
 - Practice slots available week of Jan 2-6.



Practice preferences

- Sign-up is on-line
 - Spreadsheet on Google docs.
 - Link was emailed to all head coaches with this presentation.
 - Contact your DIV coordinator if you didn't get it.
- Regular Mon–Fri slots are 6–9 pm
- Sat slots are all day, Peterson Middle provides the bulk.
- Couple of 5 pm slots available on Fri afternoon at Egan and Blach. Indicate if it works for you on the form.
- Tell me if you coach multiple teams in the comment section and if you want back to back practices.
- Make sure to enter a mobile number

Online signup sheet

- Looks like this

name	email	phone	Mon	Tue	Wed	Thu	Fri	Sat am	Sat pm
Michiel			Y	N	P	N	5P	N	N

- Choose a weekday (Mon – Thu) **and** a weekend (Fri – Sat) slot
 - Choices are Y, N, P, 5Y, 5P
- Also indicate gym location preferences(Egan/Blach)
- Intent is to give you your day and location preference
 - May not always work, but we try our best
- Do not make changes post Sat, Oct 22

Practice time communications

- Practices start Tue, Nov 1
- **Intent is to assign your practice times before draft night**
- Initial schedule is labeled PRELIMINARY
 - Do not communicate to your players
 - Tell me if there is a *real* conflict within 24 hrs
 - Remember, every change involves at least 2 teams, and often more
- Pending minor changes another schedule will be released, labeled FINAL
- With the schedule comes a PDF file with important info
 - General rules and regulations for each gym, entry access cards, apps, etc.
 - Read it !
- Jan / Feb schedule will be released by Dec 21st



Conflicts are unavoidable

- We schedule ~600 practices
 - School gyms are sometimes used for other purposes
 - If we know, we inform you in advance and try to reschedule
- Otherwise, make the best of it
 - Move over to the large gym and share a court with another team
 - Never make a stink
 - Let us know and we try to inform other teams
- Holiday activities in Dec
 - Many gyms are used by the schools for winter concerts etc.
 - We will have to double up teams in other gyms



Practice Slots Nov-Dec Availability

	EGL	BLL	EGS	BLS	PTL	SMS	MVSP	• Total
MON	0	2	2	1	0	4	4	13
TUE	4	0	0	1	0	4	0	9
WED	0	0	2	1	0	0	4	7
THU	2	0	0	1	0	4	0	7
Total	6	2	4	4	0	12	8	36
FRI	4	2	3	3	0	0	0	12
SAT	0	8	6	0	12	0	0	26
Total	4	10	9	3	12	0	0	38

Where are the gyms?

Egan Gyms

100 W Portola Ave
Los Altos, CA 94022

Blach Gyms

1120 Covington Road
Los Altos, CA 94024

Sunnyvale Middle

1080 Mango Avenue
Sunnyvale , CA 94087

Peterson Middle

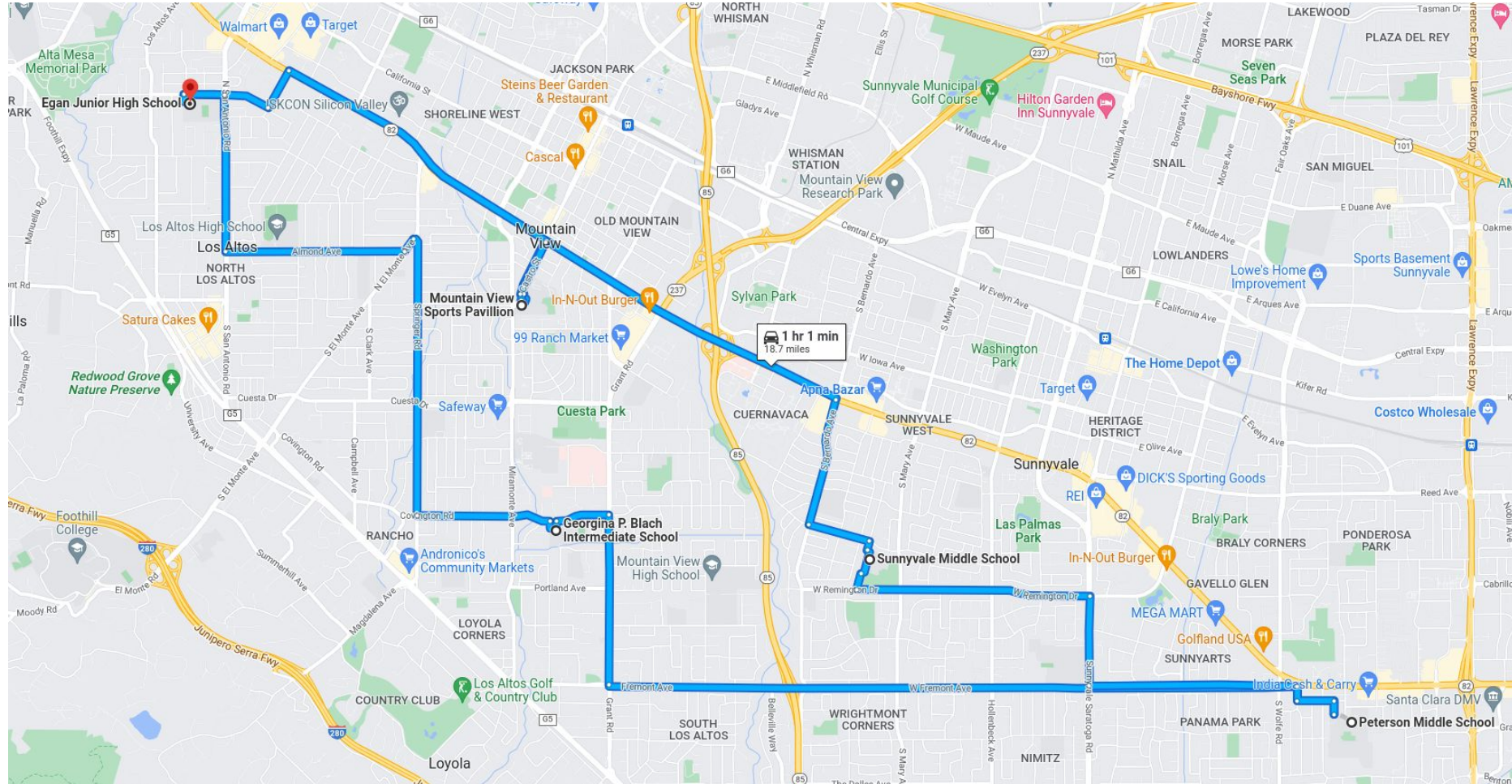
1380 Rosalia Ave
Sunnyvale, CA 94087

MVSP @Graham

1185 Castro St.
Mountain View, CA 94040



FYB Gyms



How do you get in the gyms

- Egan and Blach large gyms require an access card
 - We will distribute the card to the first coach of the day
 - If your are selected to carry a card, you are responsible to open up
 - If you don't show up on time, the other teams are stuck



- If you lose a card, let me know ASAP. If you are unable to open, you can reach out to me, your DC or Subu, so the next practices are not stuck.
- Egan and Blach small gyms require Openpath app for access.
- Sunnyvale Middle, Peterson and MVSP are opened by custodians.

Shutdowns



- No practices - Thanksgiving Nov 21 – 25
- No practices - Christmas Dec 19 – Jan 1
 - Practices resume Mon Jan 2, 2022
 - Expect Jan 2 - 6 to have light/no attendance
 - But... there is a game scheduled Sunday, Jan 8th!

Games schedule

- Sun, Nov 20 - Scrimmage
 - Schedule will be provided ~ Nov 14th
- Sun, Dec 4 - First Game
- Game schedule Released by end Nov
 - Cannot change that schedule
 - Coaches with 2 teams will be accommodated
- Game days
 - 12/4, 12/11, 12/18,
 - 1/8, 1/15, 1/22, 1/29
 - with 1 doubleheader!
- Foothill Tournament
 - Sat/Sun Feb 4th & 5th

